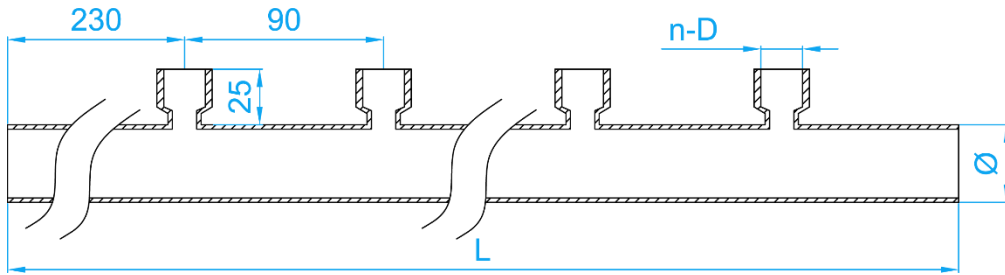


STAINLESS STEEL 316L PRESSFIT SINGLE SIDED MANIFOLDS

COMPLY WITH BSEN1254-2: 1998



CROSS SECTIONAL VIEW

* Size could be customized.

DIMENSIONS

| SKU | Ø × Thickness (mm) | n-D | L (mm) | WEIGHT (kg) |
|--------------------|--------------------|----------------|--------|-------------|
| SS316LNM03515FX04* | 35 × 1.5 | 4NOS -G1/2" FI | 1000 | 1.450 |

*This item requires special ordering. Please consult with a salesperson for the estimated lead time.