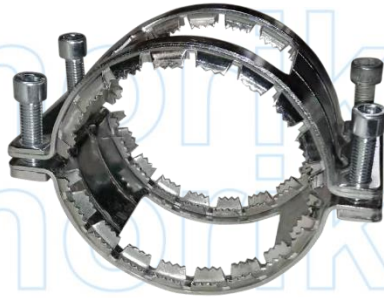
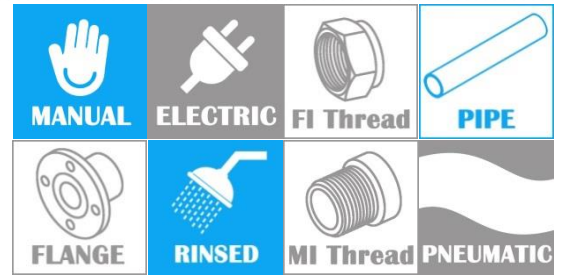
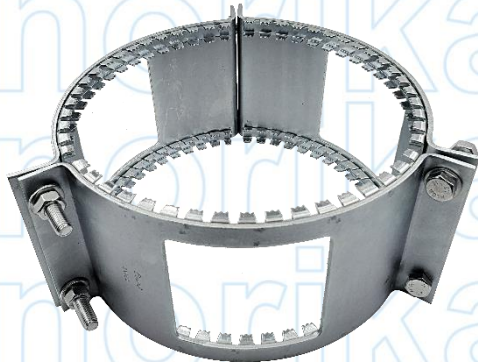


AISI304 RAPID CLAMP KOMBI GRIP COLLAR

COMPLY WITH EN877:2010



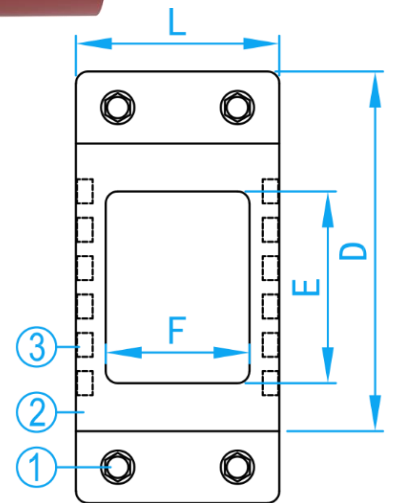
HUBKV050~150SS304



HUBKV200~300SS304



INSTALLATION ASSEMBLY



SIDE VIEW

COMPONENT PARTS

ITEM	PARTS	MATERIAL
1	Hexagon Socket Head Screw	AISI304
2	Metal Collar	AISI304
3	Claw Insert	AISI304

DIMENSIONS

SKU	SIZE (mm)	L (mm)	D (mm)	E×F (mm)	BAR	BOLT	TORQUE (Nm)	WEIGHT (kg)
HUBKV050SS304	50	88	106	60×60	7	M8	23~25	0.650
HUBKV080SS304	80	88	130	64×60	5	M8	25~28	0.765
HUBKV100SS304	100	88	160	84×60	5	M10	25~30	1.100
HUBKV125SS304	125	118	210	84×60	5	M10	40~60	-
HUBKV150SS304	150	118	230	84×80	5	M10	40~60	1.550
HUBKV200SS304	200	146	287	130×110	2.5	M12	50~65	2.605
HUBKV250SS304	250	146	320	140×110	2	M12	50~65	4.620
HUBKV300SS304	300	185	419	150×145	1	M12	50~65	-

* Used axially. extension resistance with hubless stainless steel clips [Type A, Type B & Type F].