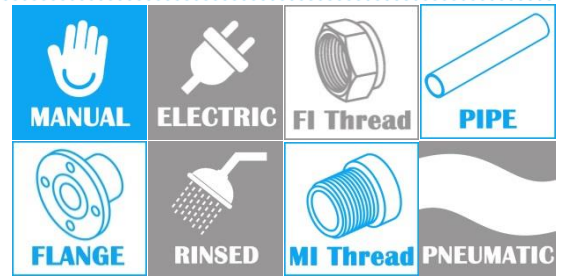
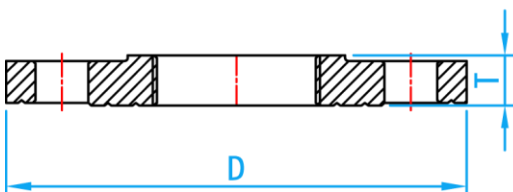
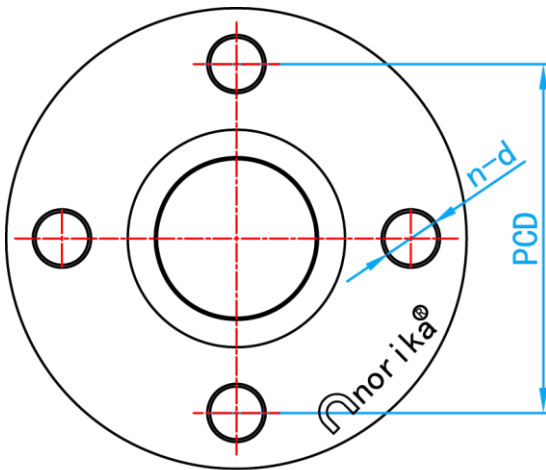


HEAVY DUTY DUCTILE IRON COMPANION FLANGE

COMPLY WITH BSEN545 PN16


COMPONENT PARTS

PARTS	MATERIAL
Flange	DUCTILE IRON



CROSS SECTIONAL VIEW

DIMENSIONS

SKU	SIZE (mm)	D (mm)	PCD (mm)	n-d (mm)	T (mm)	WEIGHT (kg)
DIFBSPT04242	1½" × 42	150	110	4-18	18	2.00
DIFBSPT05015	½" × 50	165	125	4-18	18	2.20
DIFBSPT05020	¾" × 50	165	125	4-18	18	2.20
DIFBSPT05025	1" × 50	165	125	4-18	18	2.20
DIFBSPT05035	1¼" × 50	165	125	4-18	18	2.20
DIFBSPT05042	1½" × 50	165	125	4-18	18	2.20
DIFBSPT05050	2" × 50	165	125	4-18	18	2.20
DIFBSPT06515	1/2" × 65	185	145	4-18	18	3.00
DIFBSPT06520	3/4" × 65	185	145	4-18	18	3.00
DIFBSPT06525	1" × 65	185	145	4-18	18	3.00
DIFBSPT06535	1¼" × 65	185	145	4-18	18	2.90
DIFBSPT06542	1½" × 65	185	145	4-18	18	2.90
DIFBSPT06550	2" × 65	185	145	4-18	18	2.90
DIFBSPT06565	2½" × 65	185	145	4-18	18	2.70
DIFBSPT08015	1/2" × 80	200	160	8-18	18	3.30
DIFBSPT08020	3/4" × 80	200	160	8-18	18	3.30
DIFBSPT08025	1" × 80	200	160	8-18	18	3.30
DIFBSPT08035	1¼" × 80	200	160	8-18	18	3.00
DIFBSPT08042	1½" × 80	200	160	8-18	18	3.00
DIFBSPT08050	2" × 80	200	160	8-18	18	2.60
DIFBSPT08065	2½" × 80	200	160	8-18	18	2.60
DIFBSPT08080	3" × 80	200	160	8-18	18	2.60
DIFBSPT10015	½" × 100	220	180	8-18	18	3.90
DIFBSPT10020	¾" × 100	220	180	8-18	18	3.90
DIFBSPT10025	1" × 100	220	180	8-18	18	3.90
DIFBSPT10035	1¼" × 100	220	180	8-18	18	3.90
DIFBSPT10042	1½" × 100	220	180	8-18	18	3.90
DIFBSPT10050	2" × 100	220	180	8-18	18	3.50
DIFBSPT10065	2½" × 100	220	180	8-18	18	3.30
DIFBSPT10080	3" × 100	220	180	8-18	18	3.30
DIFBSPT100100	4" × 100	220	180	8-18	18	3.20
DIFBSPT15015	½" × 150	285	240	8-22	18	6.50
DIFBSPT15020	¾" × 150	285	240	8-22	18	6.50
DIFBSPT15025	1" × 150	285	240	8-22	18	6.30
DIFBSPT15035	1¼" × 150	285	240	8-22	18	6.30
DIFBSPT15042	1½" × 150	285	240	8-22	18	6.30
DIFBSPT15050	2" × 150	285	240	8-22	18	6.10
DIFBSPT15065	2½" × 150	285	240	8-22	18	5.70
DIFBSPT15080	3" × 150	285	240	8-22	18	5.20
DIFBSPT150100	4" × 150	285	240	8-22	18	5.50
DIFBSPT150150	6" × 150	285	240	8-22	18	5.00