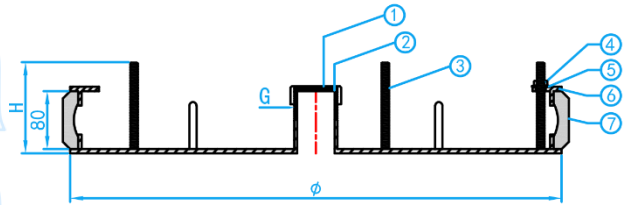
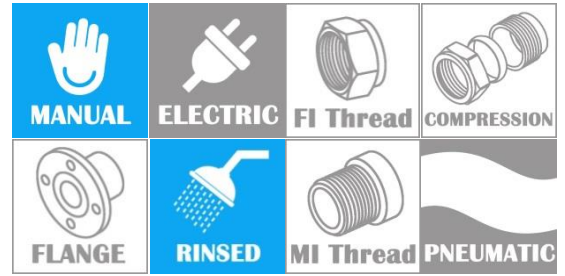


MULTI-LOCK DRAIN TEST PLUGS



CROSS SECTION VIEW

OPERATING INSTRUCTIONS

| | |
|---|--|
| 1 | Select the correct size of the plug to suit the internal diameter of the pipe. |
| 2 | Remove any grease or foreign material from installation point. |
| 3 | Ensure no dirt is trapped between seal of plug and plates. |
| 4 | Ensure plug is inserted square to pipe wall. |
| 5 | Ensure wing nut and sealing cap are fully tighten. |

COMPONENT PARTS

| ITEM | PARTS | MATERIAL |
|------|---------------|-----------------|
| 1. | Cap | Galvanized Iron |
| 2. | Rubber Washer | Natural Rubber |
| 3. | Screw | Galvanized Iron |
| 4. | Nut | Galvanized Iron |
| 5. | Washer | Galvanized Iron |
| 6. | Plate | Galvanized Iron |
| 7. | Rubber | Natural Rubber |

STANDARD SPECIFICATIONS

| SKU | SIZE(mm) | G (inch) | H (mm) | Ø (mm) | RANGE MIN/MAX (mm) | WEIGHT (kg) |
|--------|----------|----------|--------|--------|--------------------|-------------|
| TP0700 | 700 | 2" | 126 | 681 | 687-713 | 28.0 |
| TP0750 | 750 | 2" | 126 | 731 | 737-763 | 31.6 |
| TP0800 | 800 | 2" | 126 | 781 | 787-813 | 35.2 |
| TP0900 | 900 | 2" | 126 | 881 | 887-913 | 42.7 |
| TP1000 | 1000 | 2" | 126 | 981 | 987-1013 | 50.3 |
| TP1050 | 1050 | 2" | 126 | 1031 | 1037-1063 | 56.0 |
| TP1100 | 1100 | 2" | 126 | 1081 | 1087-1113 | 60.5 |
| TP1150 | 1150 | 2" | 126 | 1131 | 1137-1163 | - |
| TP1200 | 1200 | 2" | 126 | 1181 | 1187-1213 | 70.0 |