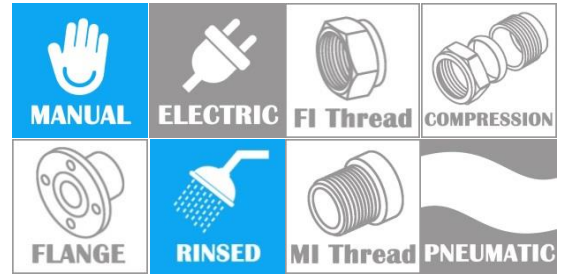
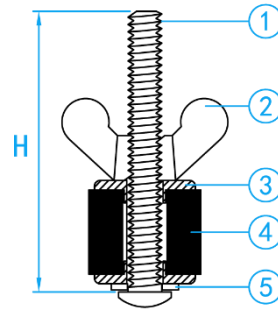


CENTRE LOCKING DRAIN TEST PLUGS

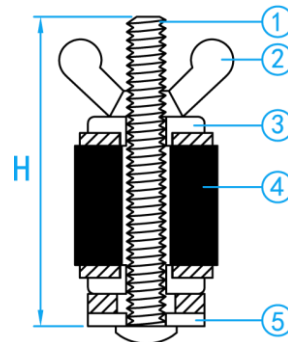


TP0020



CROSS SECTION VIEW

TP0025



CROSS SECTION VIEW

OPERATING PROCEDURES

- Select the correct size of the plug to suit the internal diameter of the pipe.
- Remove any grease or foreign materials from installation point.
- Ensure not dirt is trapped between seal of plug and plates.
- Ensure plug is inserted square to pipe wall.
- Ensure wing nut and sealing cap are fully tighten.

COMPONENT PARTS

ITEM	PARTS	MATERIAL
1	Screw	AISI304
2	Wing Nut	AISI304
3	Washer	AISI304
4	Rubber	Natural Rubber
5	Washer	AISI304

STANDARD SPECIFICATIONS

SKU	SIZE (mm)	H (mm)	BSP OUTLET SIZE	RANGE MIN/MAX (mm)	WEIGHT (kg)
TP0020	20	50	M6	18.5-24.0	0.029
TP0025	25	50	M6	22.0-27.0	0.038