

## NORIKA UNISTRUT ACCESSORIES



# TEST CERTIFICATE

**Certificate Number** : TC-J0481  
**Issue No** : 02

**Client** : **Liang Chew Hardware Pte Ltd**  
133 Kitchener Road  
Singapore 208517

**Product** : Unistrut Channel & Accessories

**Brand / Model** : Norika / Unistrut Channels & Accessories

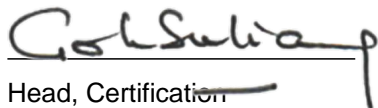
**Detail** : Various sizes

**Specification** : Load test per Client's specifications

**Test Report** : 2322269/01-OYC, 2322269/02CR1-OYC, 2322269/03-OYC,  
2322269/06-OYC, 2322269/09-OYC, 2322269/10-OYC,  
2625573/01-TKC, 2625573/02-TKC, 2625573/03-TKC,  
2625573/04-TKC, 2625573/05-TKC, 2625573/06-TKC,  
2625573/07-TKC

## Summary

A sample of the product submitted was tested and found to comply with the test requirements of the above standard(s).



Head, Certification  
**Singapore Test Lab Pte Ltd**

Date of Original Issue:

17 April 2026

Date of Last Revision:

06 May 2026

Date of Expiry:

16 April 2028

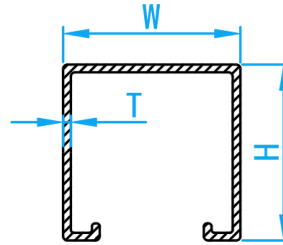
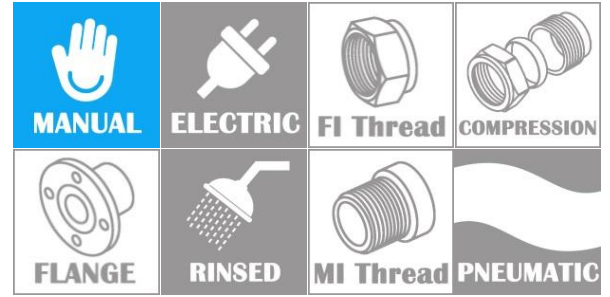
This Certificate is part of a full report and should be read in conjunction with it. This Certificate remains the property of Singapore Test Lab Pte Ltd and shall be returned upon request. The use of this Certificate is subjected to the Terms and Conditions of Singapore Test Lab Pte Ltd.



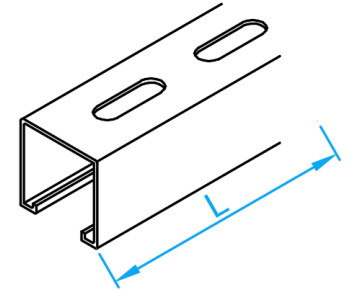
Singapore Test Lab Pte Ltd certifies according to ISO / IEC 17065



# UNISTRUT CHANNEL



CROSS SECTIONAL VIEW



3-D VIEW

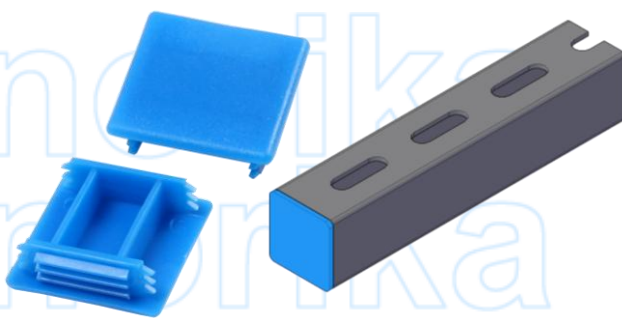
## STANDARD SPECIFICATIONS

Material	Rolled Pre-galvanised Steel Channel Sections
----------	--

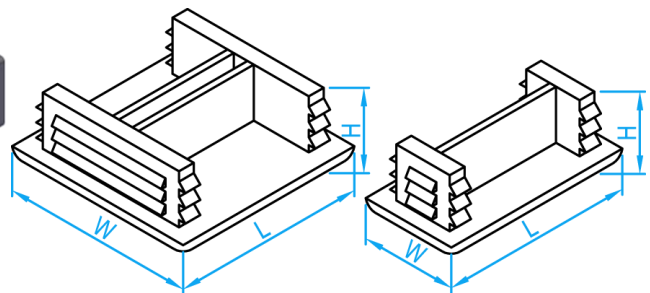
## DIMENSIONS

SKU	Hole (mm)	W(mm)	H (mm)	L (mm)	T(mm)	WEIGHT (kg)
OL4141SL	With Hole	41.3	41	6000	2.5	15.40
OL4141SL-3M	With Hole	41.3	41	3000	2.5	7.70
OL4141	Without Hole	41.3	41	6000	2.5	15.40
OL4141-3M	Without Hole	41.3	41	3000	2.5	7.70
OL4121SL	With Hole	41.3	21	6000	2.5	10.30
OL4121SL-3M	With Hole	41.3	21	3000	2.5	5.20
OL4121	Without Hole	41.3	21	6000	2.5	10.30
OL4121-3M	Without Hole	41.3	21	3000	2.5	5.20

# UNISTRUT CHANNEL PVC END CAP



INSTALLATION ASSEMBLY

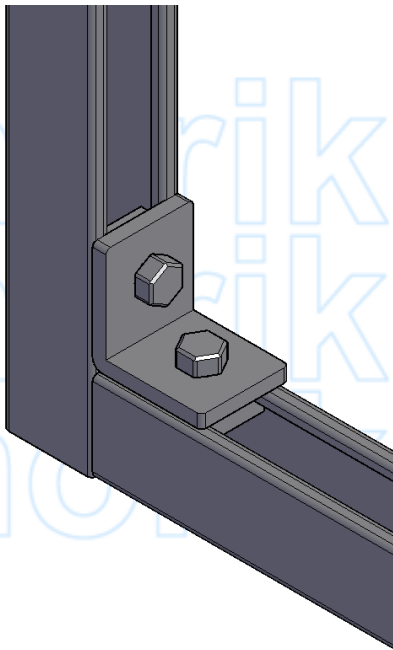
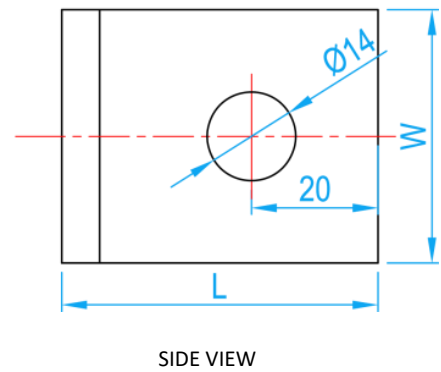
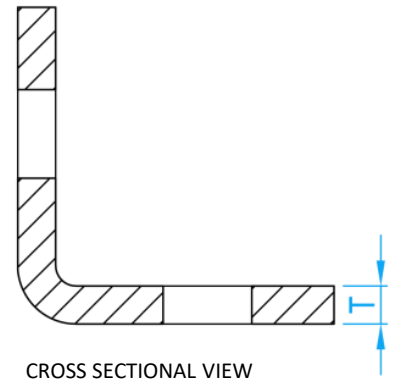
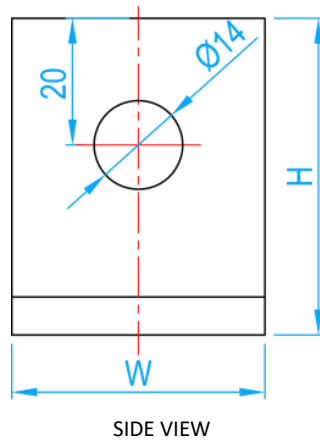
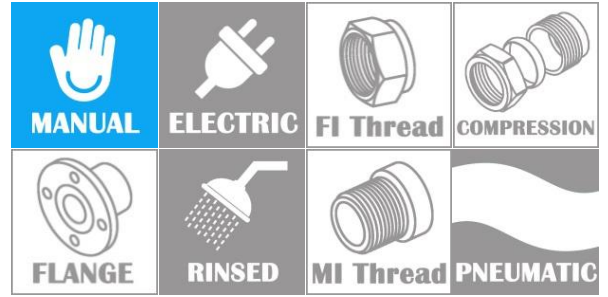


3-D VIEW

## DIMENSIONS

SKU	Material	L(mm)	W (mm)	H (mm)	WEIGHT (kg)	PCS/CTN
OLEC41	PVC	41.0	41.0	12.0	0.0060	600
OLEC21	PVC	21.0	42.0	12.3	0.0028	500

# UNISTRUT SLOTTED BRACKET



INSTALLATION ASSEMBLY

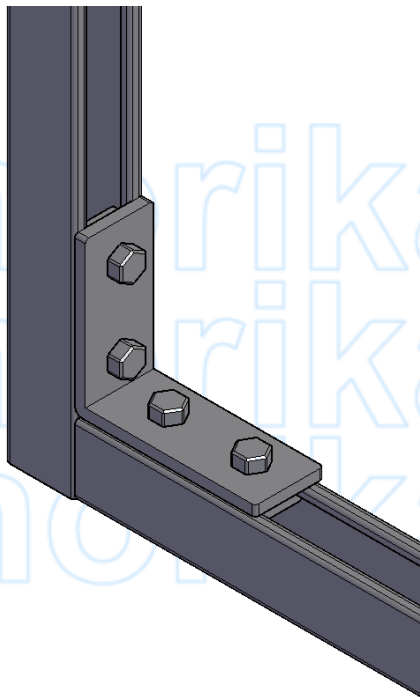
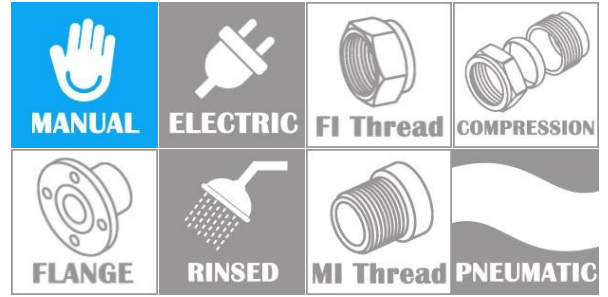
## COMPONENT PARTS

MATERIAL	Mild Steel
COATING	Cold Galvanized

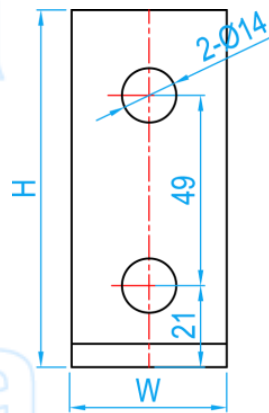
## DIMENSIONS

SKU	W (mm)	H (mm)	L (mm)	T (mm)	WEIGHT (kg)	PCS/CTN
OLSBA050	40	50	50	6	0.145	120

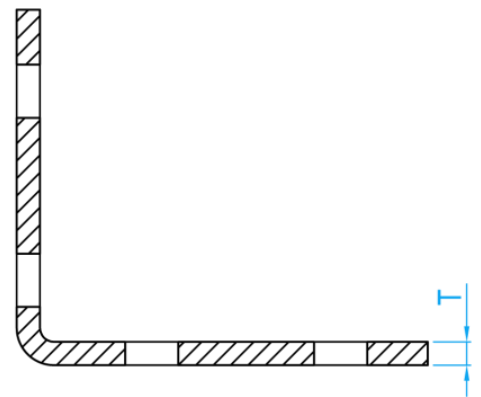
# UNISTRUT SLOTTED ANGLE BRACKET



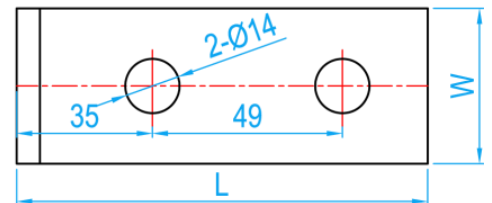
INSTALLATION ASSEMBLY



SIDE VIEW



CROSS SECTIONAL VIEW



SIDE VIEW

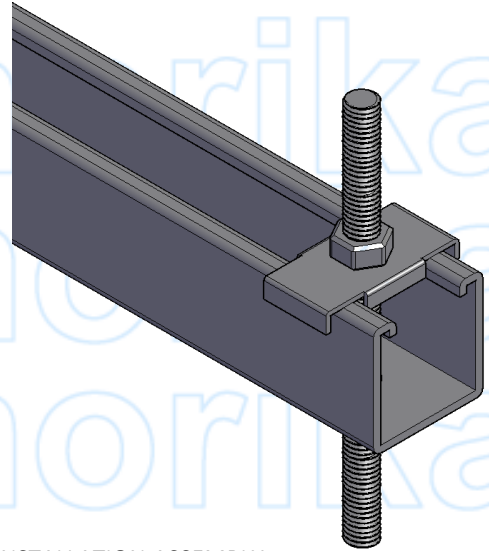
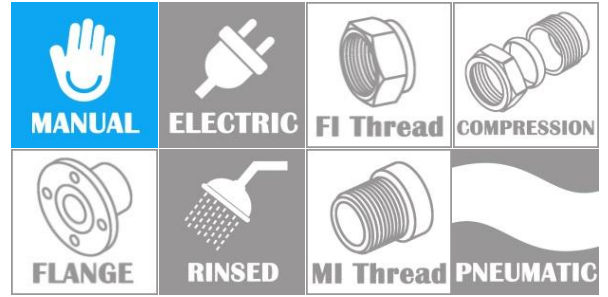
## COMPONENT PARTS

MATERIAL	Mild Steel
COATING	Cold Galvanized

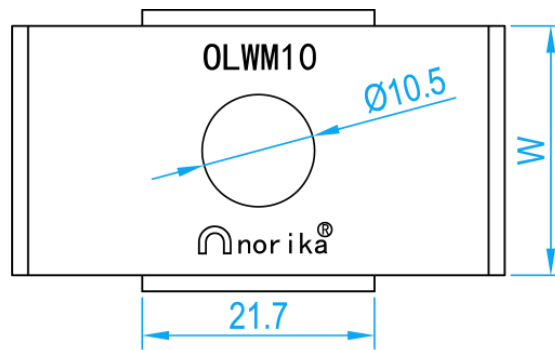
## DIMENSIONS

SKU	W (mm)	H (mm)	L (mm)	T (mm)	WEIGHT (kg)	PCS/CTN
OLSBA100	40	92	106	6	0.300	50

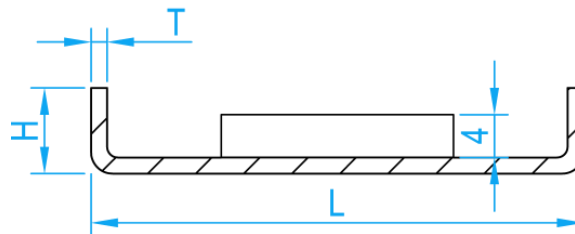
# UNISTRUT HOLDING BRACKET



INSTALLATION ASSEMBLY



TOP VIEW

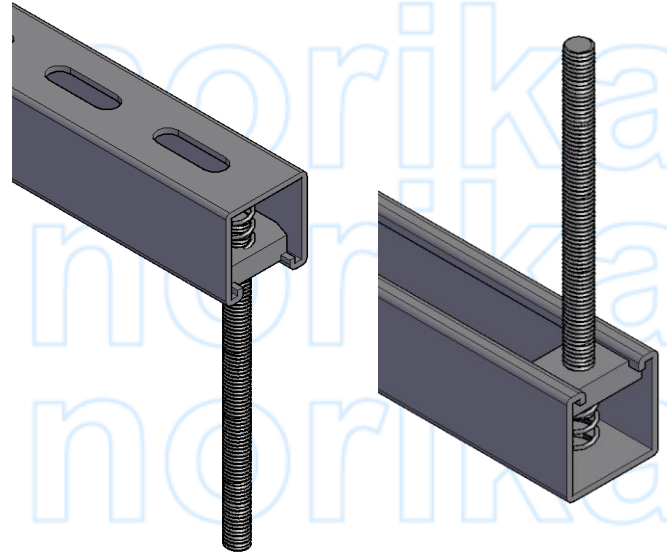
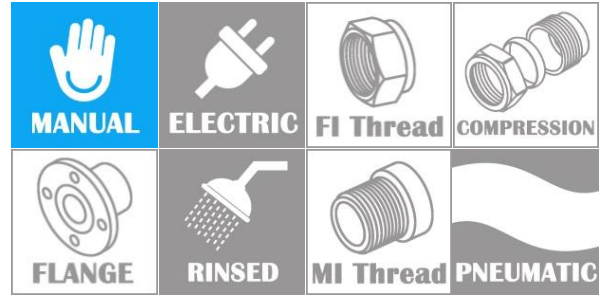


CROSS SECTIONAL VIEW

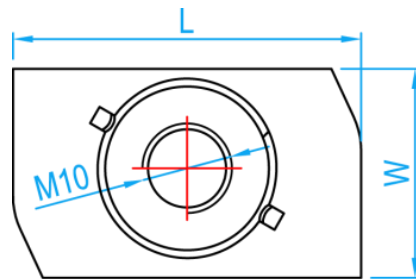
## DIMENSIONS

SKU	Material	W (mm)	H (mm)	L (mm)	T (mm)	WEIGHT (kg)	PCS/CTN
OLHB21	Galvanized Iron	23.3	7	50	1.5	0.017	1000

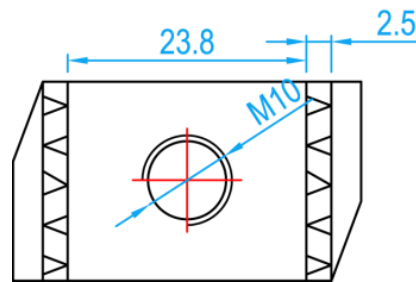
# UNISTRUT LONG SPRING CHANNEL NUT



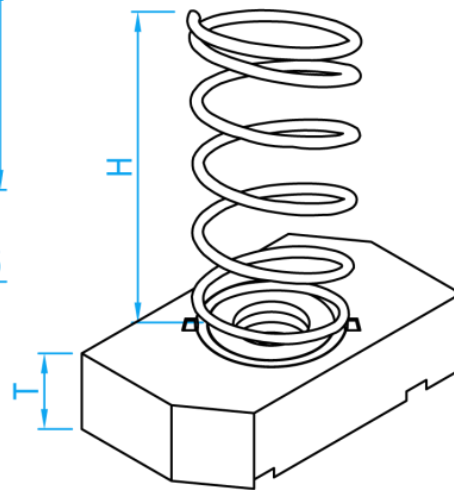
INSTALLATION ASSEMBLY



TOP VIEW



BOTOM VIEW

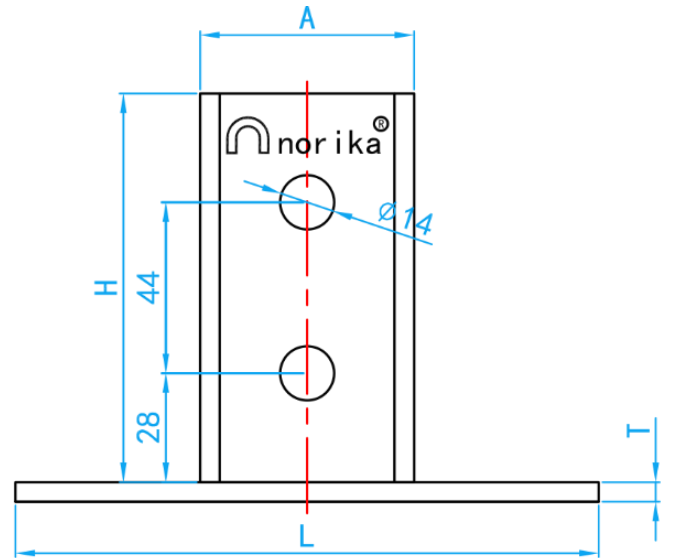
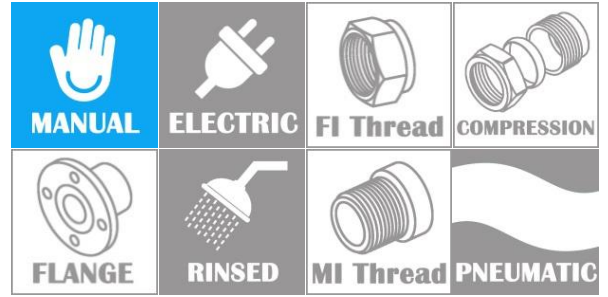


3-D VIEW

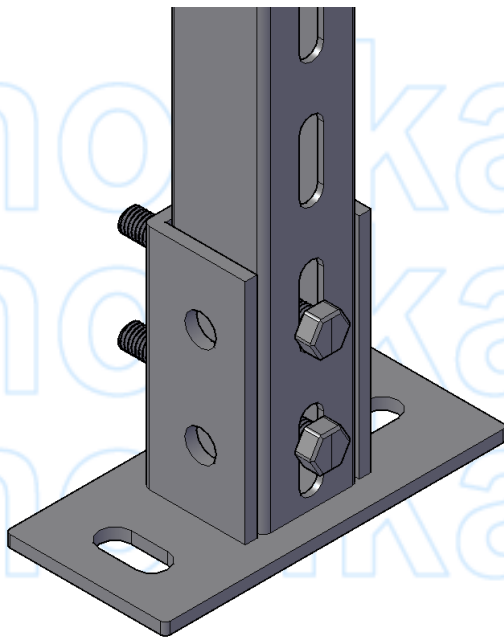
## DIMENSIONS

SKU	Material	W (mm)	H (mm)	L (mm)	T (mm)	WEIGHT (kg)	PCS/CTN
OLSNM10	Galvanized Iron	21	36	35	9.5	0.046	400

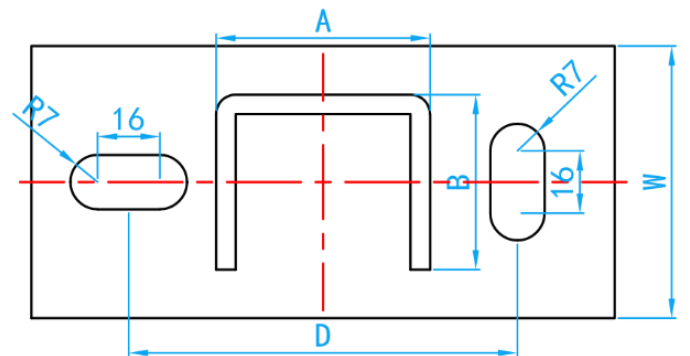
# UNISTRUT END SUPPORT BRACKET



SIDE VIEW



INSTALLATION ASSEMBLY

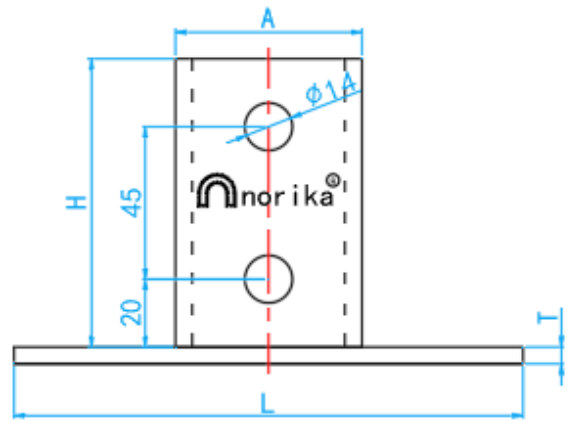
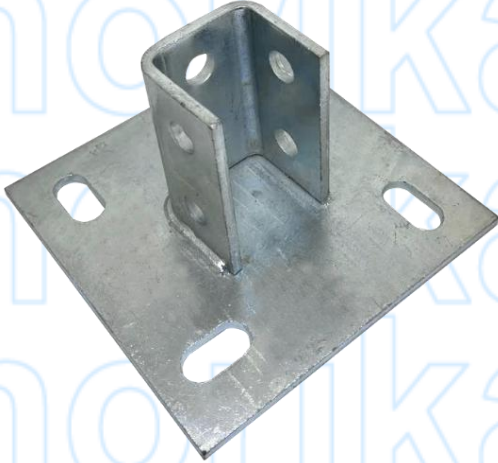
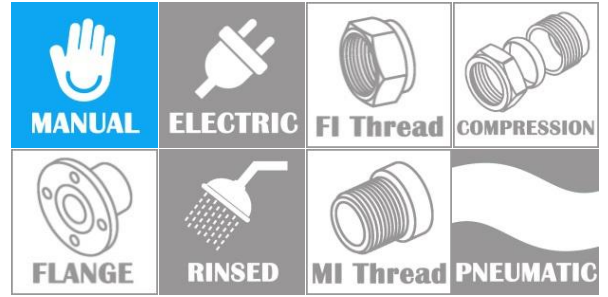


TOP VIEW

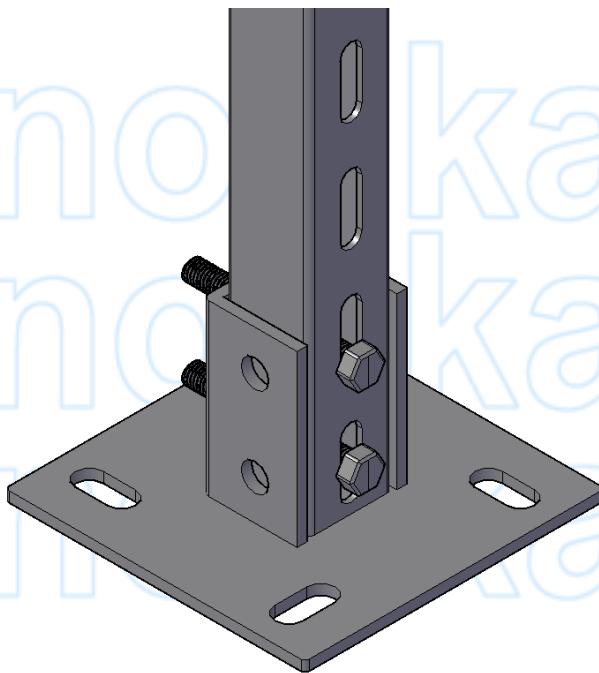
## DIMENSIONS

SKU	L (mm)	W (mm)	T (mm)	H (mm)	A (mm)	B (mm)	D (mm)	WEIGHT (kg)	PCS/CTN
OLES4141	150	70	5	100	55	45	100	0.825	40

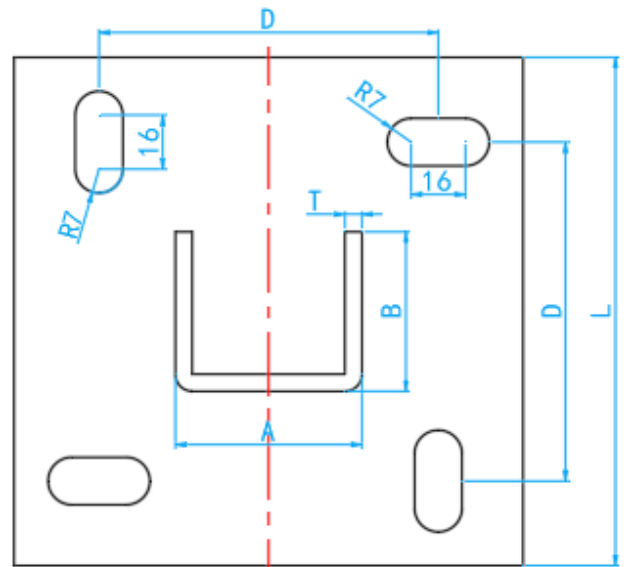
# UNISTRUT END SUPPORT BRACKET



SIDE VIEW



INSTALLATION ASSEMBLY

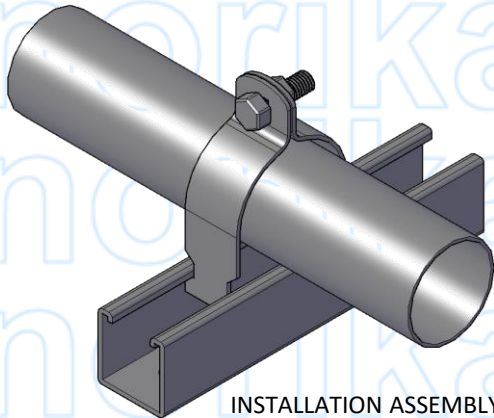
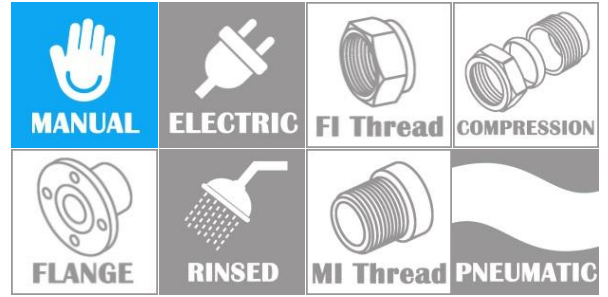


TOP VIEW

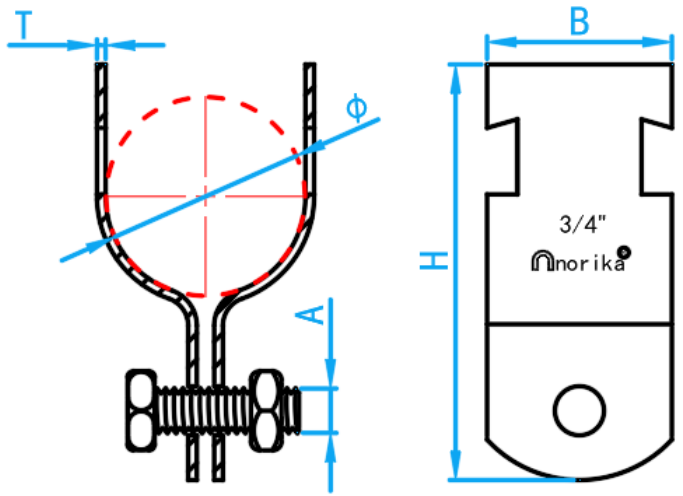
## DIMENSIONS

SKU	L (mm)	W (mm)	T (mm)	H (mm)	A (mm)	B (mm)	D (mm)	WEIGHT (kg)	PCS/CTN
OLESB4141	150	/	5	85	55	47	100	1.21	20

# UNISTRUT CONDUIT SADDLE CLAMP



INSTALLATION ASSEMBLY



CROSS SECTIONAL VIEW

SIDE VIEW

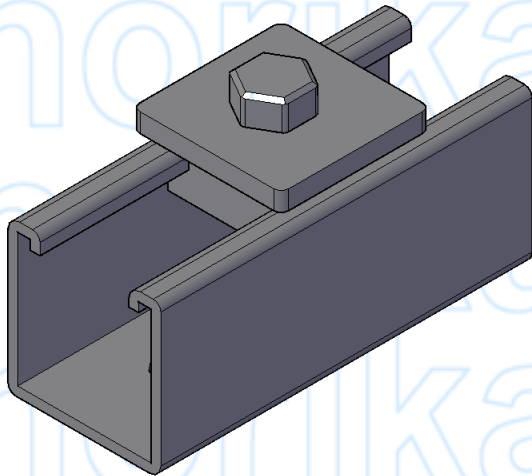
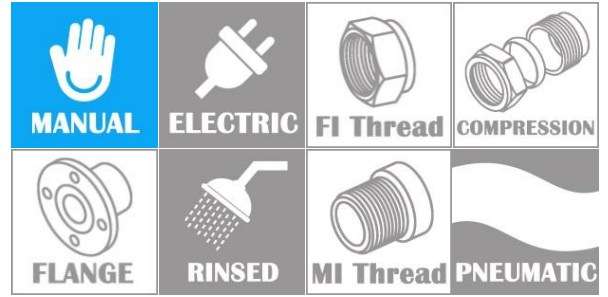
## COMPONENT PARTS

MATERIAL	Mild Steel
COATING	Cold Galvanized

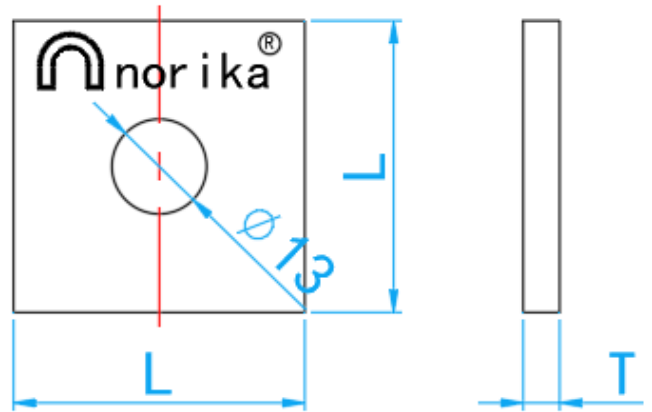
## DIMENSIONS

SKU	Ø (mm)	A (mm)	B (mm)	H (mm)	T (mm)	WEIGHT (kg)	PCS/CTN
OLSC015	21.0	M6*25	32.0	64.0	1.1	0.035	600
OLSC020	27.0		32.0	72.0	1.1	0.040	500
OLSC025	33.5		32.0	72.0	1.1	0.044	500
OLSC035	42.3		32.0	82.0	1.5	0.067	400
OLSC040	48.0		32.0	95.0	1.5	0.071	300
OLSC050	60.0	M8*30	32.0	105.0	2.0	0.124	220
OLSC065	75.5		32.0	115.0	2.0	0.145	200
OLSC080	88.5		32.0	134.0	2.0	0.165	180
OLSC100	114.0		32.0	158.0	2.0	0.195	120
OLSC150	165.0		32.0	205.0	2.5	0.326	85
OLSC200	219.0	M8*40	32.0	265.0	2.5	0.408	60
OLSC250	273.0		32.0	325.0	2.5	0.500	40
OLSC300	324.0		32.0	380.0	2.5	0.575	40

# UNISTRUT HOLDING WASHER



INSTALLATION ASSEMBLY



TOP VIEW

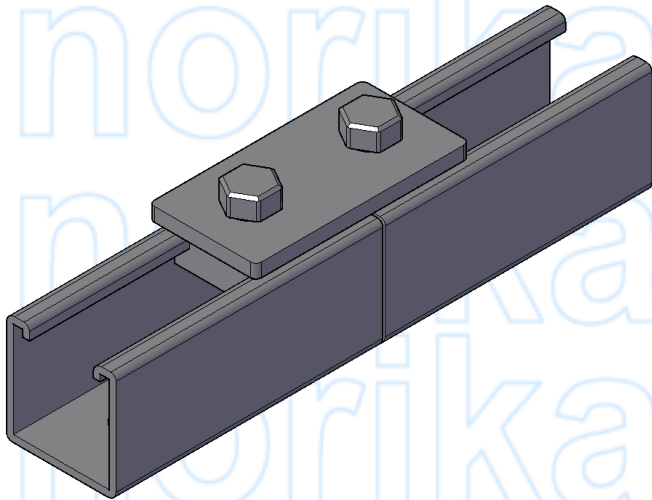
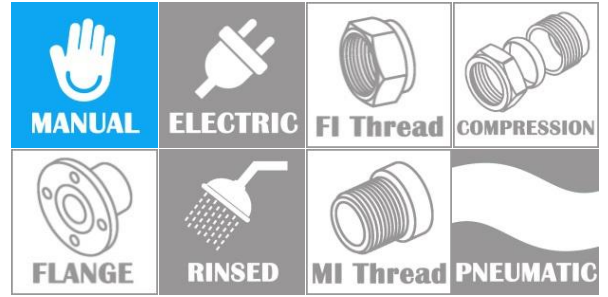
**COMPONENT PARTS**

MATERIAL	Galvanized Iron
----------	-----------------

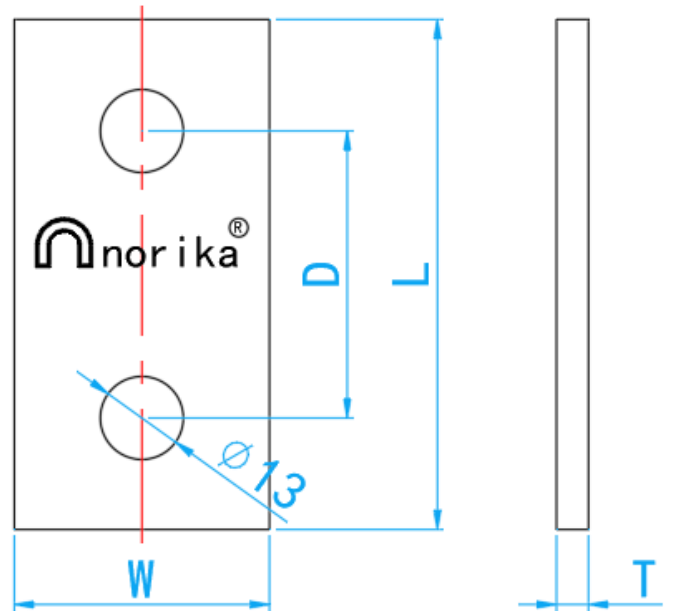
**DIMENSIONS**

SKU	L (mm)	T (mm)	WEIGHT (kg)	PCS/CTN
OLW4040	40	5	0.055	300

# UNISTRUT 2 HOLE SLOTTED SPLICE PLATE



INSTALLATION ASSEMBLY



TOP VIEW

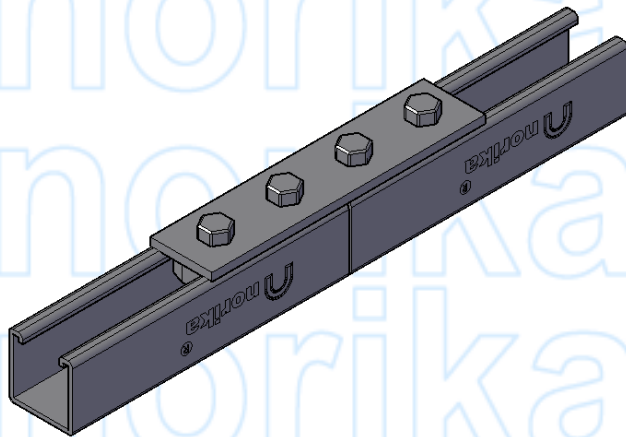
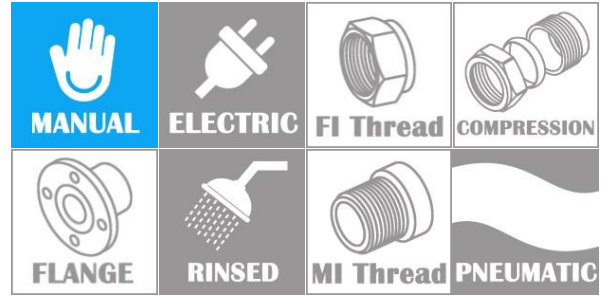
COMPONENT PARTS

MATERIAL	Mild Steel
COATING	Cold Galvanized

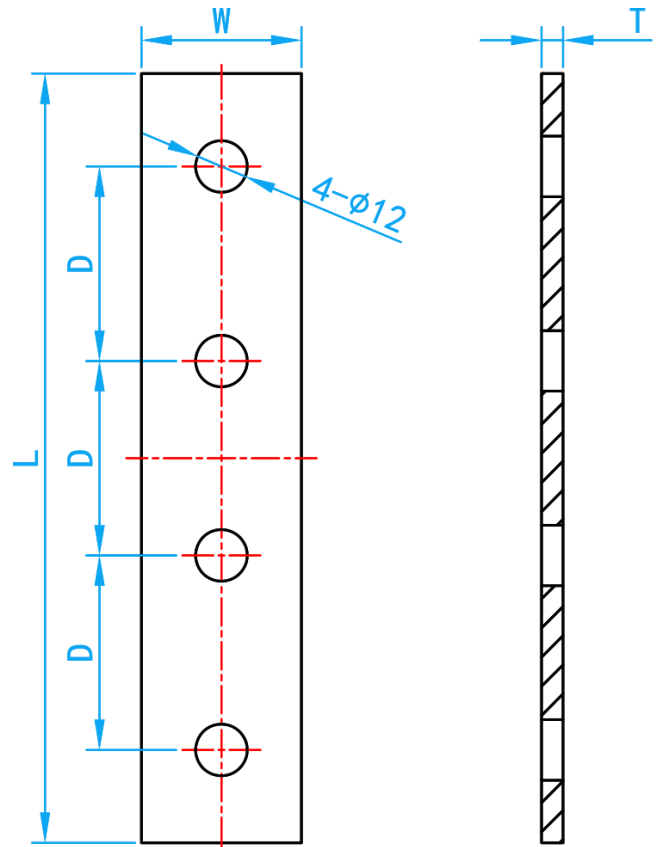
DIMENSIONS

SKU	L (mm)	W (mm)	T (mm)	D (mm)	WEIGHT (kg)	PCS/CTN
OLSB1065	80	40	5	45	0.11	1000

# UNISTRUT 4 HOLE SLOTTED SPLICE PLATE



INSTALLATION ASSEMBLY



TOP VIEW

SECTION VIEW

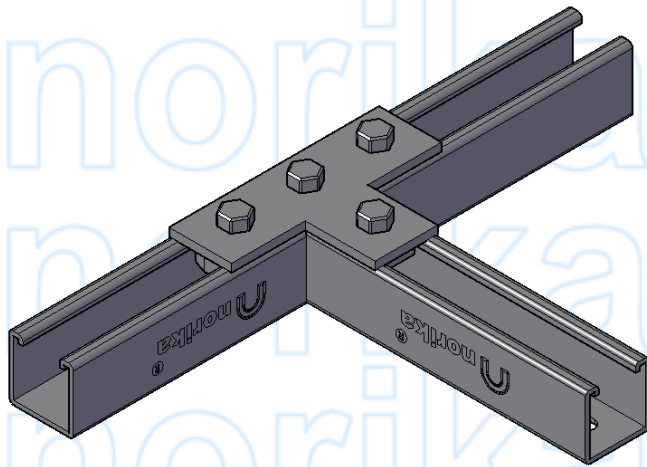
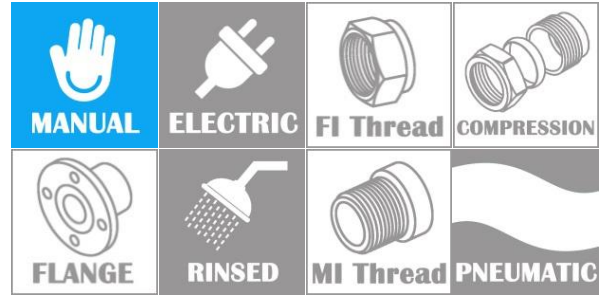
COMPONENT PARTS

MATERIAL	Mild Steel
COATING	Cold Galvanized

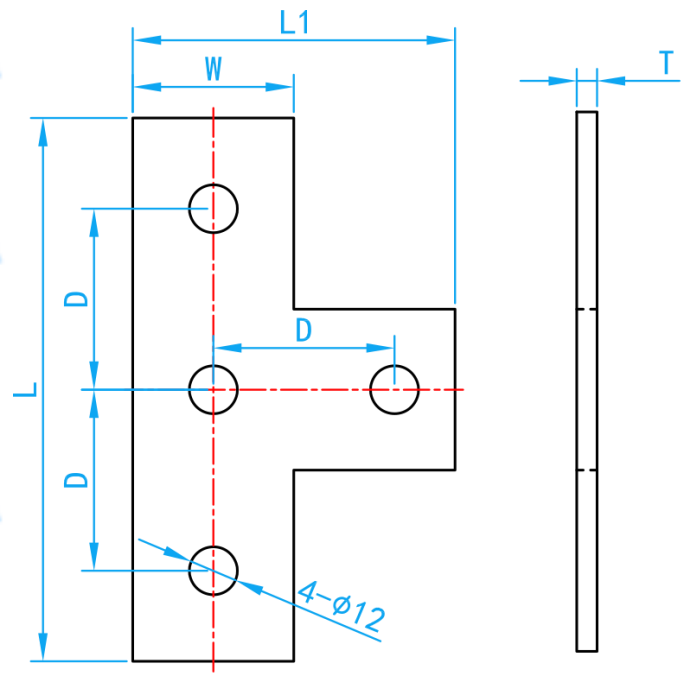
DIMENSIONS

SKU	L (mm)	W (mm)	T (mm)	D (mm)	WEIGHT (kg)	PCS/CTN
OLSB1067	178	37	4.7	45	0.225±10	60

# UNISTRUT 4 HOLE T FLAT SLOTTED SPLICE PLATE



INSTALLATION ASSEMBLY



TOP VIEW

SECTION VIEW

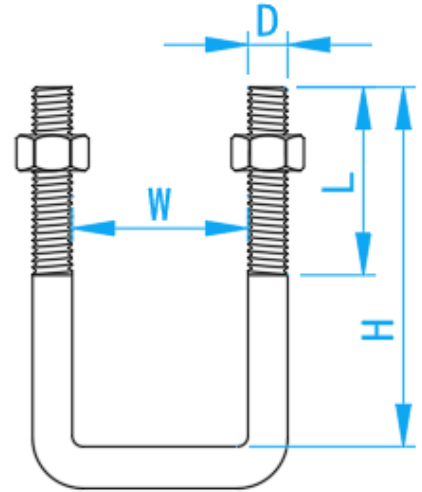
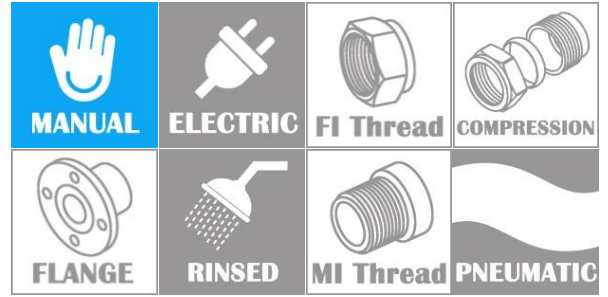
### COMPONENT PARTS

MATERIAL	Mild Steel
COATING	Cold Galvanized

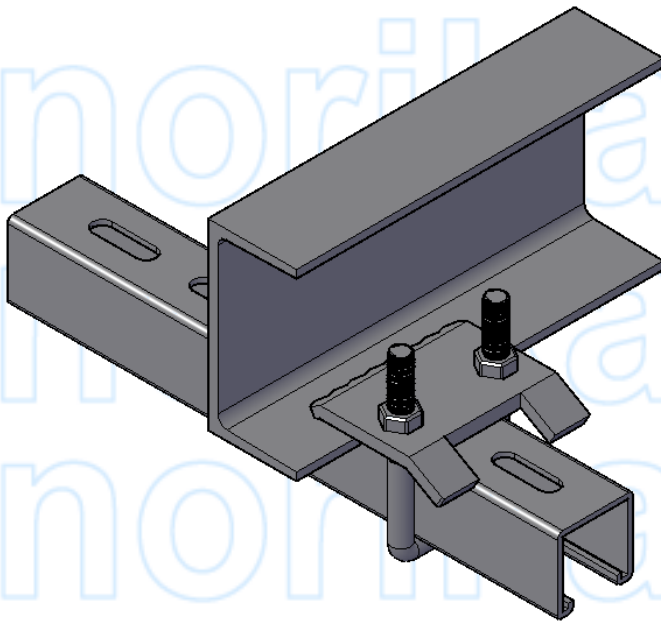
### DIMENSIONS

SKU	L (mm)	L1 (mm)	W (mm)	T (mm)	D (mm)	WEIGHT (kg)	PCS/CTN
OLSBT1031	135	80	40	4.7	45	0.225±10	60

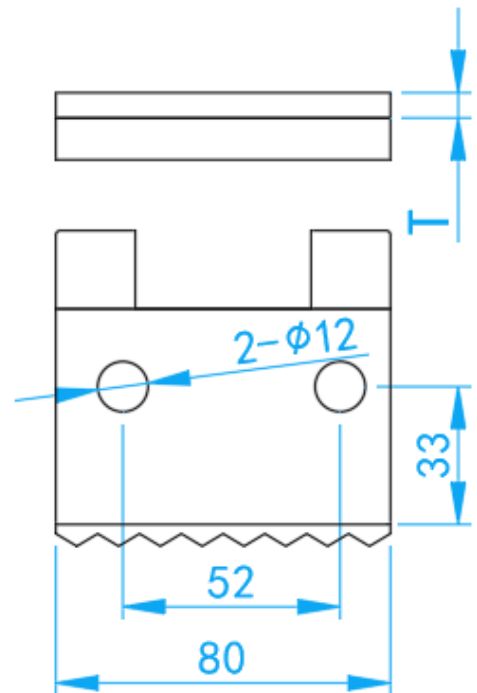
# UNISTRUT BEAM CLAMP / U-BOLT BEAM CLAMP



U BOLT SIDE VIEW



INSTALLATION ASSEMBLY

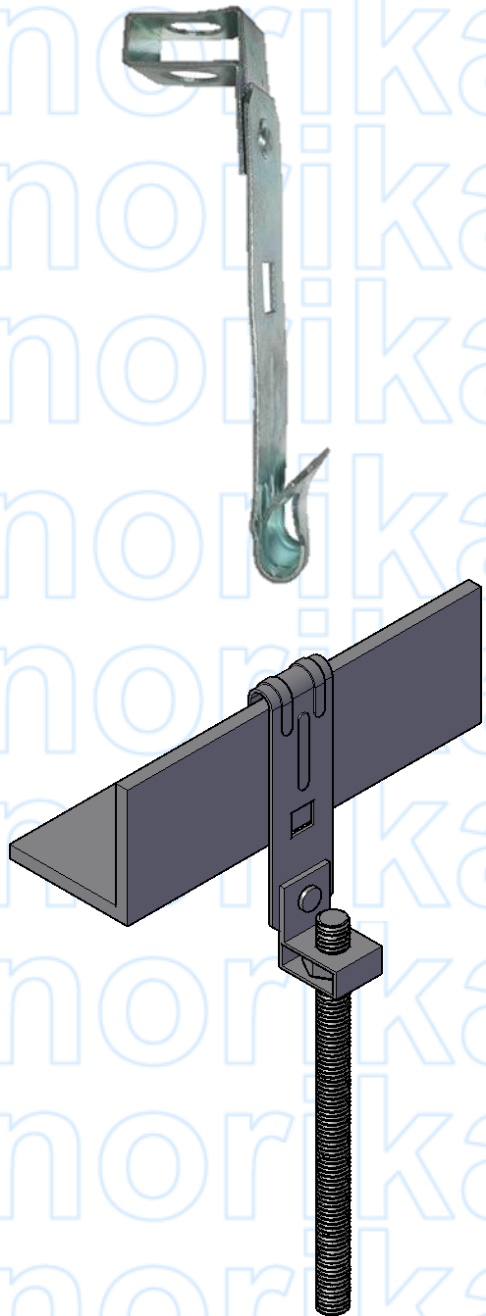
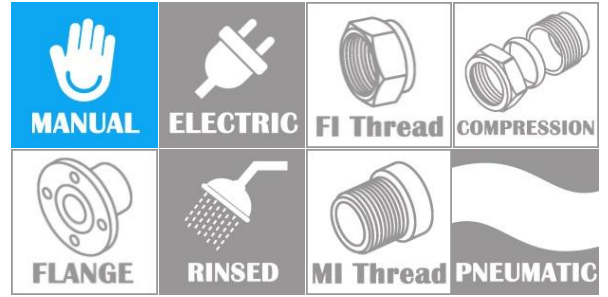


PRESSPLATE TOP VIEW

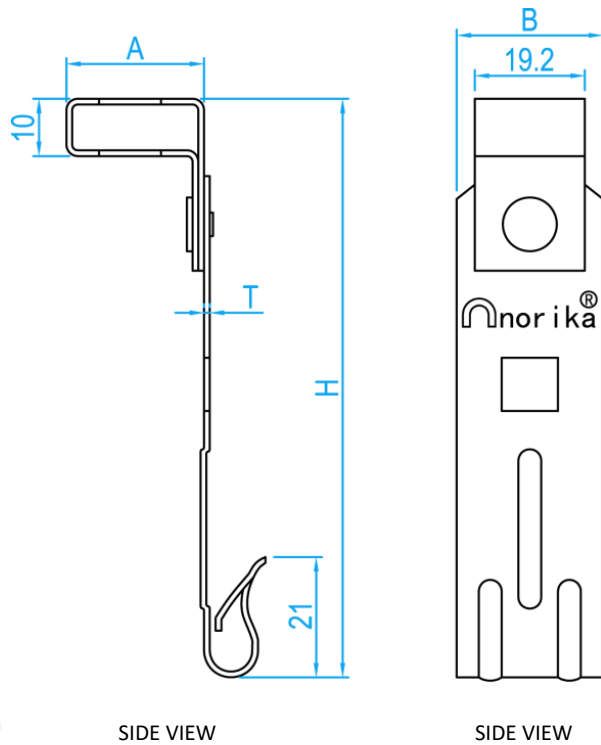
## DIMENSIONS

SKU	W (mm)	D (mm)	L (mm)	H (mm)	T (mm)	WEIGHT (kg)	PCS/CTN
OLUB	42	M10	50	89	6	0.200	200

# UNISTRUT F CLIP



INSTALLATION ASSEMBLY



SIDE VIEW

SIDE VIEW

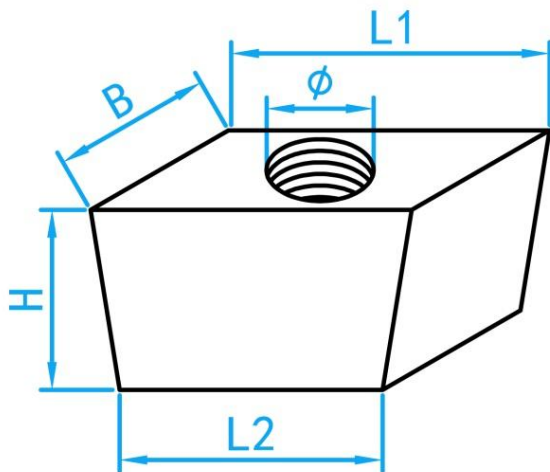
**COMPONENT PARTS**

MATERIAL	65Mn Steel
COATING	Cold Galvanized

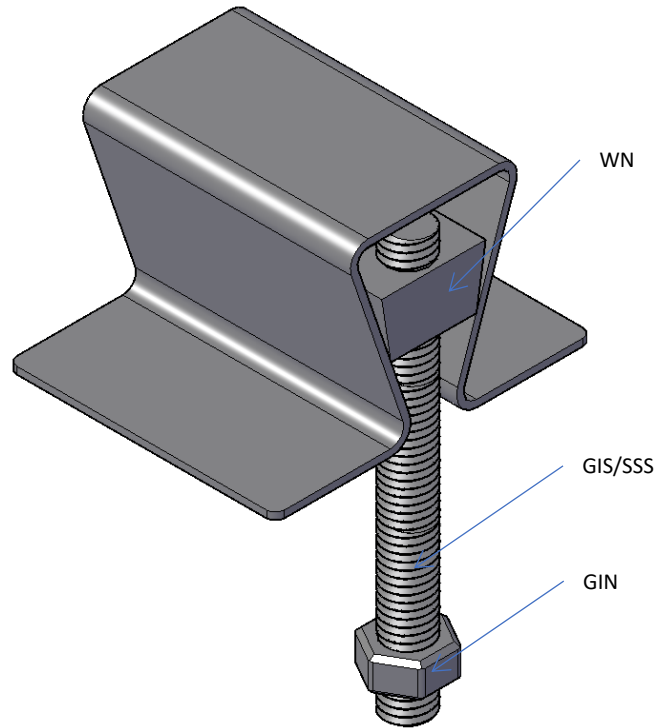
**DIMENSIONS**

SKU	A (mm)	B (mm)	H (mm)	T (mm)	WEIGHT (kg)	PCS/CTN
OLFCB	23.0	25.5	105.0	1.0	0.035	500

# UNISTRUT GALVANIZED IRON WEDGE NUT



3D View



INSTALLATION ASSEMBLY

**APPLICATIONS:**

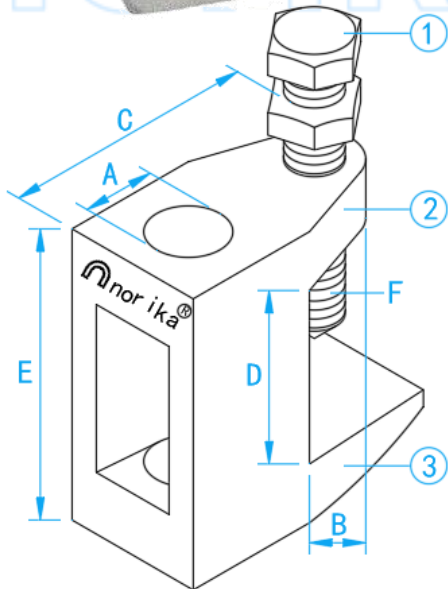
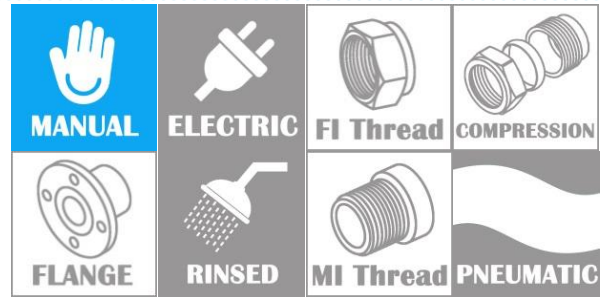
For the installation of service hangers in Norika Strut Channels.

Allowable Working Load Capacity: 3.0 KN

**DIMENSIONS**

SKU	Thread Size $\phi$	L1 (mm)	L2 (mm)	B (mm)	H (mm)	WEIGHT (kg)	PCS/CTN
WN38	3/8"	23.25 $\pm$ 0.5	19.12 $\pm$ 0.5	11.5 $\pm$ 0.5	13.18 $\pm$ 0.5	0.02	1000
WNM10	M10	23.25 $\pm$ 0.5	19.12 $\pm$ 0.5	11.5 $\pm$ 0.5	13.18 $\pm$ 0.5	0.02	1000

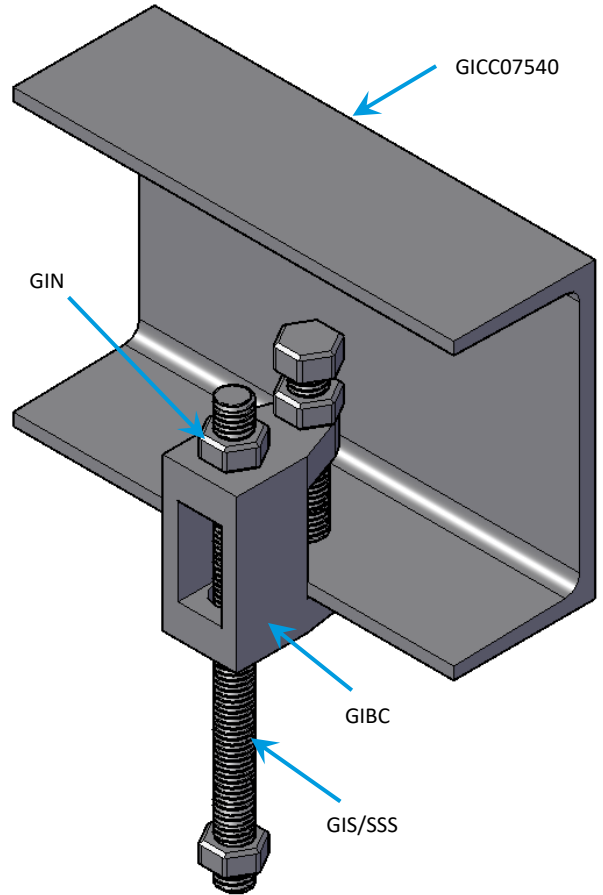
# UNISTRUT GALVANIZED IRON BEAM CLAMP



3-D VIEW

**APPLICATION:**

For attachment to the top flange of structural shapes or for use under roof installations with bar joist type construction where the thickness of flange or joist does not exceed 5/8".



INSTALLATION ASSEMBLY

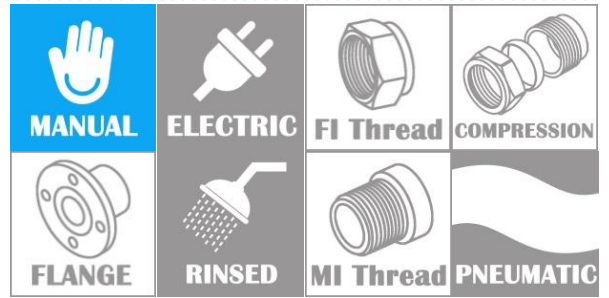
**COMPONENT PARTS**

ITEM	PARTS	MATERIAL
1.	Bolt	Galvanized Iron
2.	Body	Galvanized Iron
3.	Finishing	Zinc Plated

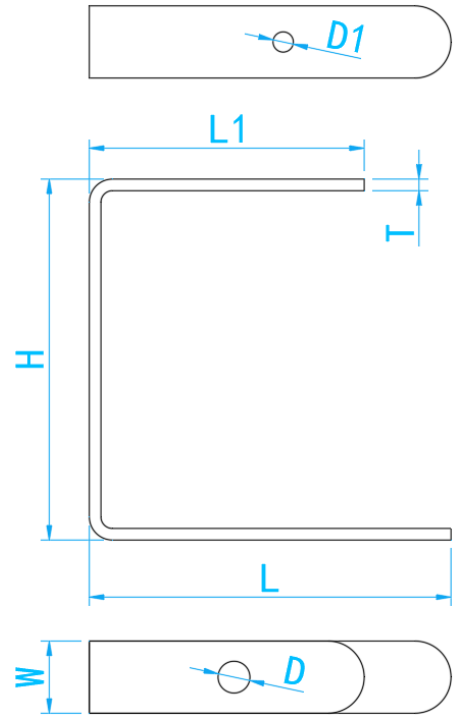
**STANDARD SPECIFICATIONS**

SKU	A	B (mm)	C (mm)	D (mm)	E (mm)	F (inch)	MAX REC LOAD (kg)	WEIGHT (kg)	PCS/CTN
GIBC38	3/8" 10mm	24	43	17	40	3/8"	500	0.153	100
GIBC38B (BIG MOUTH)	3/8" 10mm	21	44	32	52	3/8"	500	0.265	100
GIBC12B (BIG MOUTH)	1/2" 13mm	21	44	32	52	3/8"	950	0.245	100

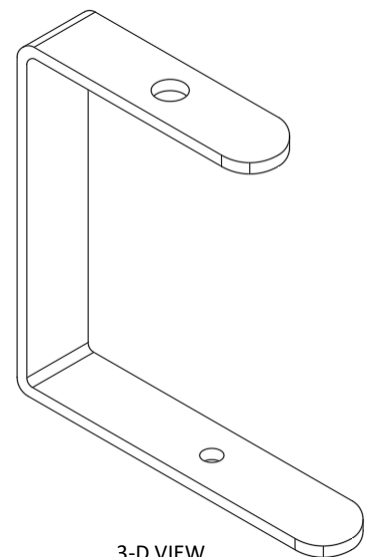
# UNISTRUT C TYPE BRACKET (FOR CABLE TRAY)



INSTALLATION ASSEMBLY



SIDE VIEW

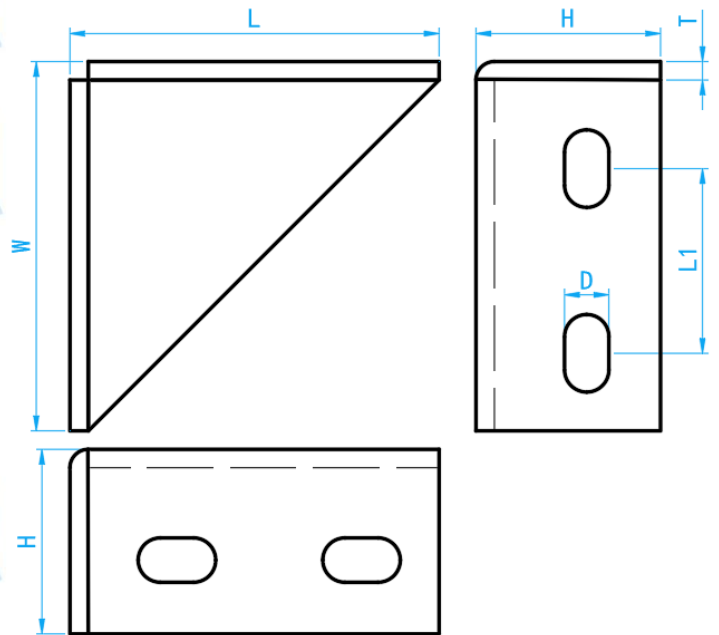
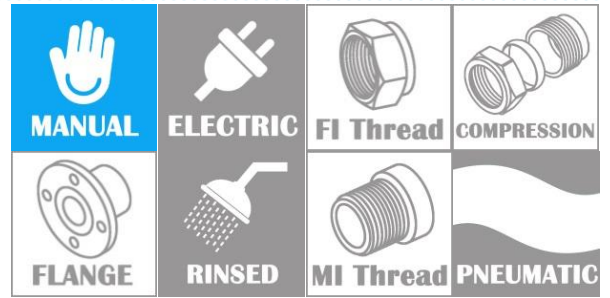


3-D VIEW

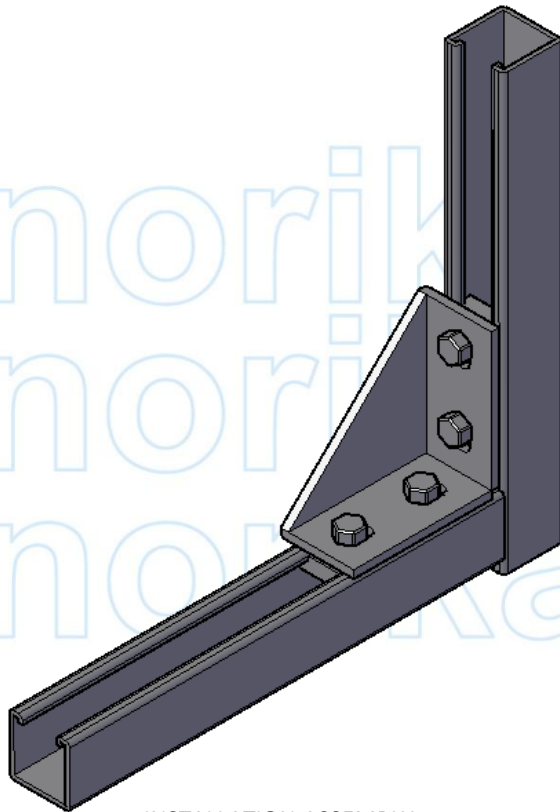
## DIMENSIONS

SKU	Material	L (mm)	L1 (mm)	H (mm)	W (mm)	D (mm)	D1 (inch)	T (mm)	WEIGHT (kg)
OLCTB	Galvanized Iron	125	95	125	25	11	7	4	0.2463

# UNISTRUT 90CORNER MOUNTING BRACKET



SIDE VIEW

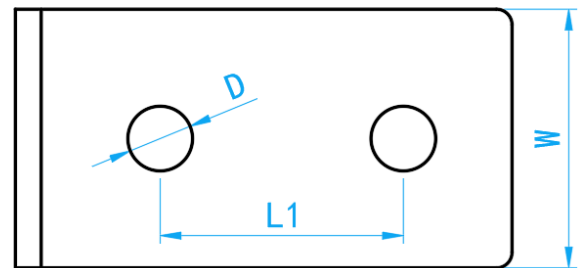
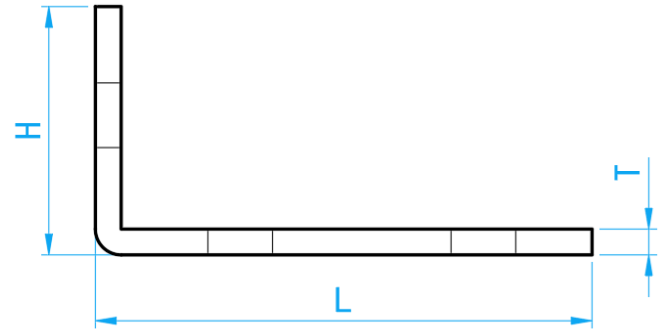
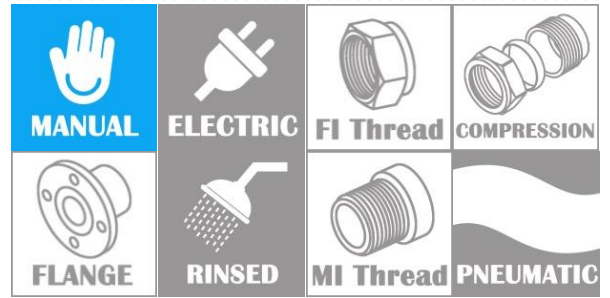


INSTALLATION ASSEMBLY

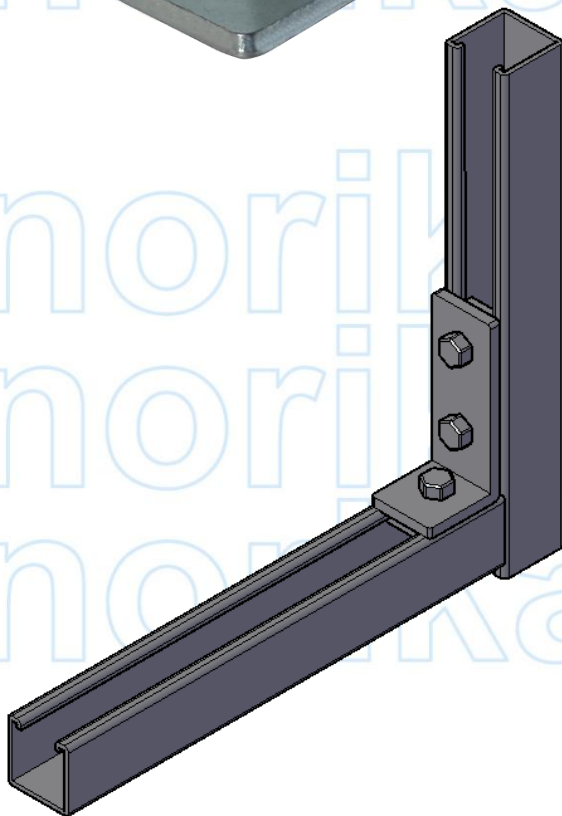
## DIMENSIONS

SKU	Material	L (mm)	L1 (mm)	H (mm)	W (mm)	D (mm)	T (mm)	WEIGHT (kg)
OLSACB	Galvanized Iron	100	50	50	100	12	5	0.428

# UNISTRUT 90 MOUNTING BRACKET



SIDE VIEW

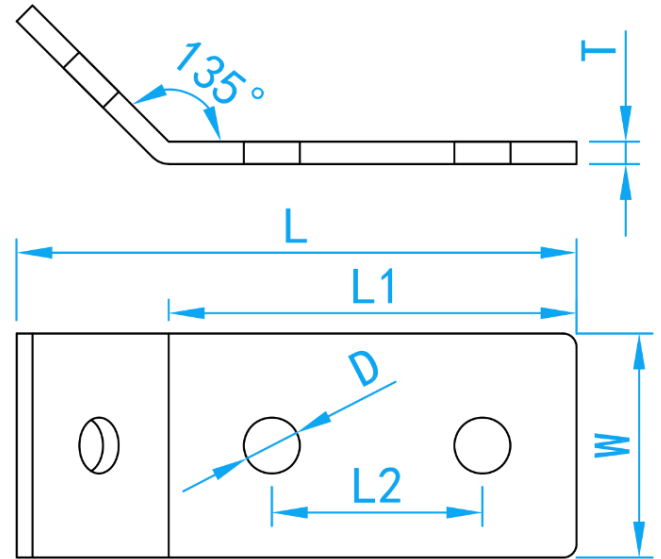
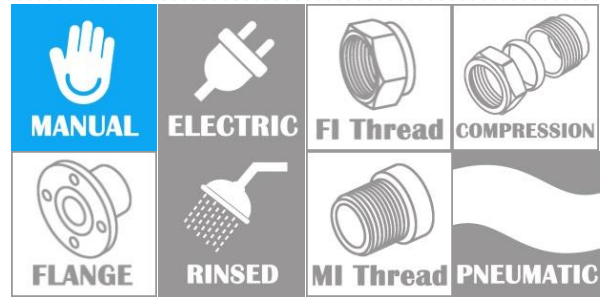


INSTALLATION ASSEMBLY

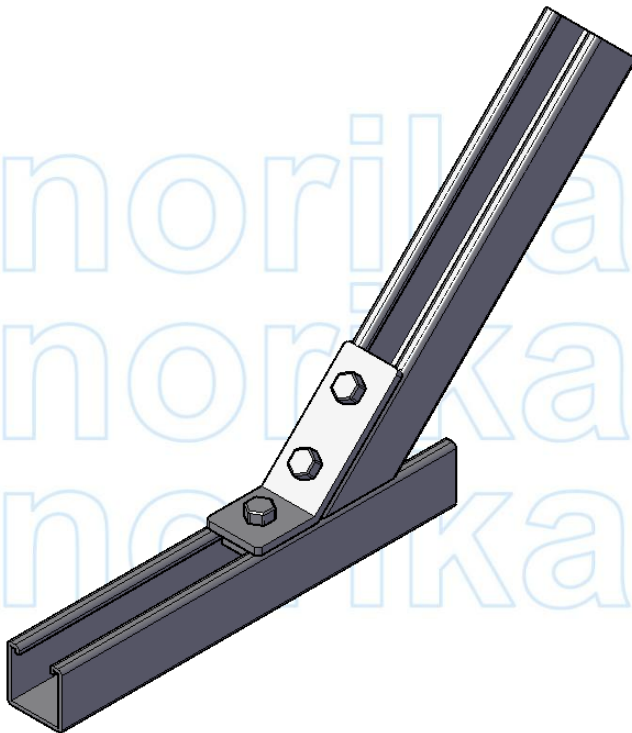
## DIMENSIONS

SKU	Material	L (mm)	L1 (mm)	H (mm)	W (mm)	D (mm)	T (mm)	WEIGHT (kg)
OLSBA090	Galvanized Iron	96	47	48	40	12.5	5	0.192

# UNISTRUT 45 MOUNTING BRACKET



SIDE VIEW

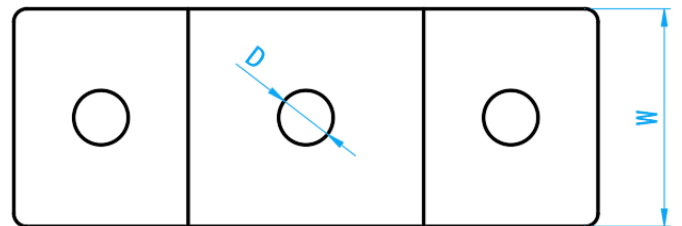
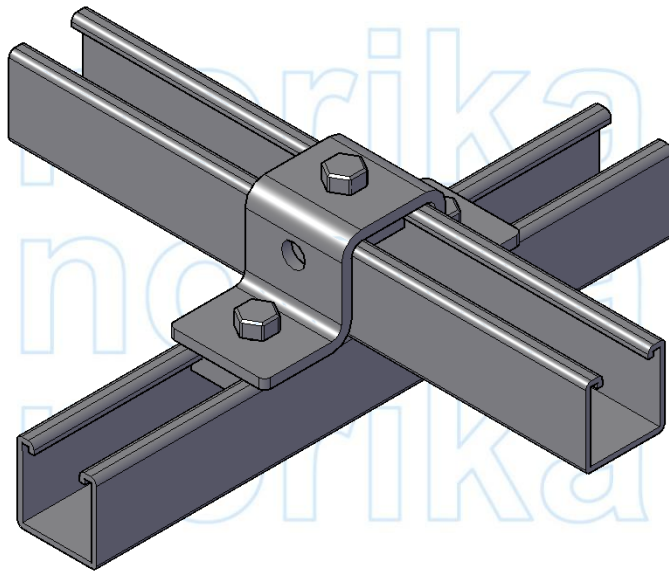
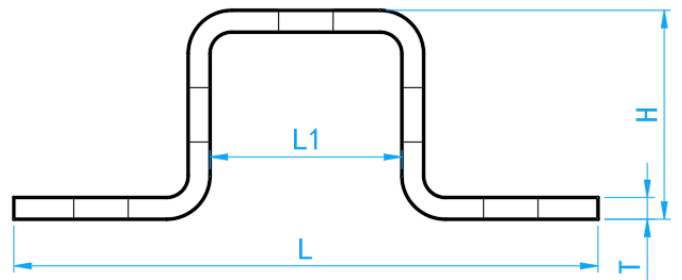
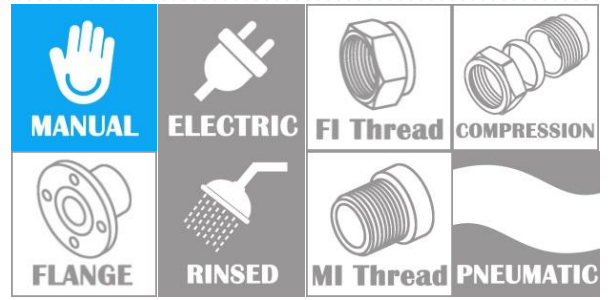


INSTALLATION ASSEMBLY

## DIMENSIONS

SKU	Material	L (mm)	L1 (mm)	L2 (mm)	W (mm)	D (mm)	T (mm)	WEIGHT (kg)
OLSBA09045	Galvanized Iron	125	91	47	40	12.5	5	0.192

# UNISTRUT U-SHAPED CONNECTOR BRACKET



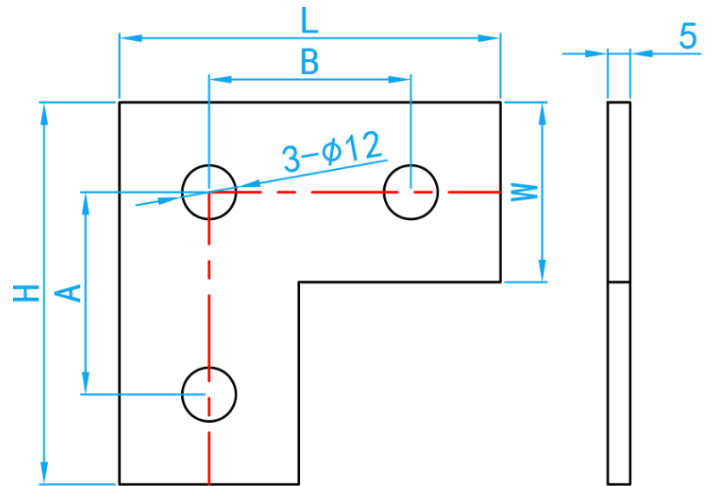
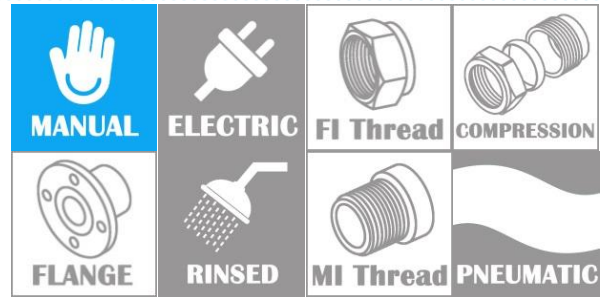
SIDE VIEW

INSTALLATION ASSEMBLY

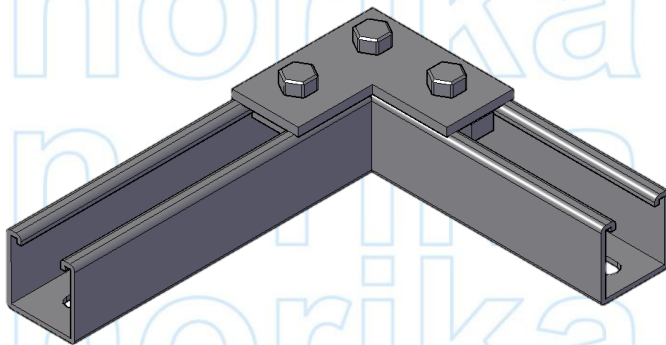
## DIMENSIONS

SKU	Material	L (mm)	L1 (mm)	H (mm)	W (mm)	D (mm)	T (mm)	WEIGHT (kg)
OLCB4141	Galvanized Iron	134	44	48	40	12.5	5	0.272

# UNISTRUT FLAT L PLATE BRACKET



SIDE VIEW



INSTALLATION ASSEMBLY

## DIMENSIONS

SKU	Material	H (mm)	A (mm)	L (mm)	B (mm)	HOLE D (mm)	W (mm)	T (mm)	WEIGHT (kg)
OLFLP	Galvanized Iron	85	45	85	45	12	40	5	0.173

## Built For Water

### **Main Office**

133 Kitchener Road  
Singapore 208517

Mon-Fri: 8:00am - 5:30pm  
Sat: 8:00am - 1:00pm  
Sun & PH: Closed

### **North Office**

10 Admiralty Street, North  
Link Building #02-45  
Singapore 757695

Mon-Fri: 8:00am - 5:00pm  
Sat: 8:00am - 1:00pm  
Sun & PH: Closed